

## Going Back to Yarrawonga Itinerary

### 6 Day / 5 Nights Package

*Captain Charles Sturt never suspected, as he trekked the dense bushland of our region in 1838, that this newly discovered area would become known as the heart of Sun Country on the Murray. Nor would he had believed that Yarrawonga – Mulwala’s climate, boasting more sunshine hours than our far north neighbours, would become a natural ‘magnet’ to holiday makers.*

#### Day 1

Board our Luxury Coach from your specified location for the beginning of your Linga Longa holiday in Yarrawonga. We travel along the Freeway with regular stops along the way.

We then arrive late afternoon at Yarrawonga’s finest, award winning **Central Motor Inn** and settle in after your coach journey. You can relax at the motel and enjoy our lovely courtyard or private pool area or enjoy shopping and seeing what Yarrawonga has to offer. For those shopping enthusiasts, the motel is situated right on the doorstep of our local shops.



Prior to dinner, we invite all guests to an informal get together for a wine tasting and cheese platter.

*Tonight, we head next door to the Tame Restaurant for a delicious Aussie BBQ themed dinner. This venue is perfect, with its’ private dining, and ideally located just next door to the motel. This is one of Yarrawonga’s newest restaurants and is open exclusively for our guests and is an ideal venue to get to socialise with everyone.*

#### Day 2

After breakfast we will be delighted to remind you of our beautiful twin townships of Yarrawonga and Mulwala which are also spilt by the border and the Murray River. This region is famous for its wonderful climate and diversity of attractions for visitors. This tour will also help you get your bearings for when you explore our town at your own leisure.



We start our journey today with the first stop at the new silo artwork showcases a Wedge Tailed eagle, symbolizing the connection to the metal eagle in the Lions Park and paying homage to the traditional owners, the Kwat Kwat/Bangerang.

The left silo portrays indigenous figures camped along the Boosey Creek, and a Scar Tree runs down the centre, connecting the two silos. The design also features local plants and rare wildflowers. The top right showcases the first passenger train engine that serviced Katamatite in its early settlement days. The bottom of both silos features a depiction of horses pulling a scoop to create irrigation channels, which played a crucial role in opening up the region to farming.

Our next stop today is The Mokoan Hub & Café for morning tea. The Mokoan Hub & Café is a **not-for-profit business** that provides local employment and uses local produce. Every dollar spent at cafe supports cafe operation and ongoing site restoration of the Winton Wetlands habitat. Café has beautiful views over the wetlands in a contemporary architect designed casual space. Friendly atmosphere in a close to nature environment



After enjoying our tea at café we visit Goorambat which is the beginning of our Silo Art Trail and view the silo complex where there are three painted silos, by renowned Australian artist Jimmy DVate. Also located here is the Goorambat Uniting Church which houses the amazing Sophia Mural. Sometimes overlooked but worth an extra stop after checking out the silo art.



We then travel to Swanpool, which is nestled on the Broken River where we visit the town's central landmark, the cinema.



Built in 1957, the cinema was once the Memorial Hall and has a stage, dressing rooms and ticket box and is transformed into a living '50's style cinema museum. From the flashing lights to the red carpets, flip up seats to the candy bar, Swanpool Cinema oozes with the elegance and style of a bygone era.

Be transported back in time as we enjoy watching the advertisements and films from yesteryear.

We will provide light lunch here after the movies.

We then make our way to the historical town of Benalla, Ned Kelly's hometown, the epicenter of Kelly's bush ranging days and the headquarters for the Kelly gang manhunt.



We visit the beautiful Botanical Gardens with its Rose Gardens and the Memorial Statue of Sir Edward Ernest (Weary) Dunlop and a lasting memorial of Captain Hector Waller, which honors two of Benalla's, and Australia's, greatest war heroes. These memorials pay tribute to the courage and sacrifices made by all Australian soldiers and prisoners of war.

Also located in the gardens is the Benalla Art Gallery, housing a wide range of traditional and contemporary art works. The Benalla Art collection includes paintings, prints, works on paper, textiles, ceramics, and sculptures. The most visited regional gallery in Victoria, it shows works by some of Australia's greatest artists including Streeton, Roberts, Von Guerard, Arkley, and many others. On display is a tapestry of Sidney Nolan's "Glenrowan", from his Ned Kelly series. This monumental tapestry was elegantly woven by Portuguese weavers.

Fast becoming recognized as Australia's leading street art destination, Benalla hosts an incredible variety of street art murals created by street artists at the top of their game from around the world. These include Choq, Adnate, Guido van Helten, Rone, Sirum and DVATE. We then have free time to explore Benalla and see your favorite artwork up close.

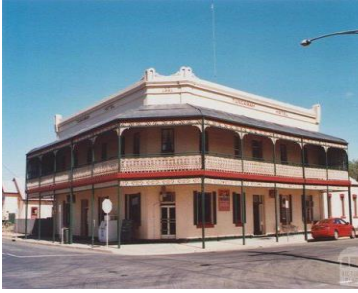
*Dinner tonight is at Yarrawonga's most popular hotel ideally located across the road from the motel.  
Here we enjoy a delicious two course meal.*

## Day 3

Today we enjoy Country Art, Cake & Coffee, Chicken and Champagne. A purely relaxing day!! Following a leisurely breakfast we continue our journey of our slice of the Silo Art Trail, Australia's largest outdoor gallery. The trail recognizes and celebrates the region's people through a series of large-scale mural portraits painted onto grain silos, many of which date back to the 1930s. The project saw a team of renowned artists from Australia and across the world visit the region, meet the locals, and transform each grain silo into an epic work of art; each one telling a unique story about the host town. We visit three small country towns, Devenish, St James & Tungamah and view these iconic paintings.



Morning tea this morning is at the Tungamah Hotel, a most impressive double storied brick building in the town center, it was built in 1891 after the original timber hotel burned down. All hotels have their own history and Tungamah is no exception. It is said to have its own resident ghost, survived a serious fire and many floods and has certainly been the topic of many unusual and amusing tales.



The silo artist, Sobrane Simcock was chosen to become the town's official 'street artist' and not only will you see her artwork around the town, but there is also a small shop at the hotel which has her work on display. Once a bustling hive of industry, Tungamah is a town with a rich sense of community, resilient in times of disaster and proud of its very strong heritage.



To ensure Tungamah's history is not forgotten a walk has been developed which includes twenty-four podium signs ensuring Tungamah's history is not forgotten. The walk covers most of the town and incorporates many of the significant sites and buildings some dating back to the early 1880s including the Tungamah Store, Peter Peters' Store, Tungamah Shire Offices, Victoria Hotel, Tungamah Hotel, Tungamah Garage, Tungamah Timber Yards, National Bank of Australasia, Pharmacy/Bakery, Post Office, and Court House. We have allowed enough time to wander and imagine life from a bygone era.

We then head back to Yarrawonga and board the P.S. Cumberoona and enjoy a delicious chicken and champagne lunch whilst relaxing on the tranquil waters and beautiful surrounds of Lake Mulwala. Tea and Coffee are also available, and the boat is licensed, and the bar will be open for those wanting to purchase something different.



**P.S. Cumberoona**- is a 25.2metre long, 6.5metre wide steam operated paddle steamer, fired by two16hp Buffalo Pitt engines circa 1906. It is a replica of the paddle steamers which worked their way up and down the mighty Murray in the days when the river was the major link to the trading world.

We then make our way back to the motel and enjoy a relaxing afternoon in our lovely courtyard or private pool area. For those shopping enthusiasts, the motel is situated right on the doorstep of our local shops.



The town of Yarrawonga offers a good variety of shops for those seeking some retail therapy. Meander through the eclectic mix of shops and galleries, old wares, and local handicraft. Discover a range of galleries, bric-a-brac and specialty stores. Take home that special souvenir, art piece, jewelry, fashionable item, accessory, or hand-crafted product. Take home a special piece of Yarrawonga. We have secured discounts for you from several local operators which provide you with great savings.

We provide you with a map showing where these shops are located, what they sell and what discounts they offer. As part of our Linga Longa Tour, you are entitled to enjoy the discounts that these businesses offer.

*Enjoy a delicious dinner tonight is at the Oriental Pearl Restaurant located at Club Mulwala.*

## Day 4

With Australia's mighty Murray River running through the heart of Albury Wodonga, you would expect to find idyllic river walks and parks. What you might not expect is an army museum with a huge collection of military memorabilia and a former migrant reception center which helped change the face of Australia.



We visit the Bonegilla Migrant Museum. Take a step back in history to post war Australia and learn more about what life was like then. This site visit gives you an opportunity not only to see the buildings, but also to consider how the location and natural surrounds framed arrival experiences.

Block 19 Bonegilla is set out as part of a typical Second World War military war camp. It was used first, as army headquarters and then, as the migrant centre staff block. The army continued to use and maintain Block 19 into the 1990s, well after the migrant centre closed. Block 19's survival to the present day makes it a rare but representative example of post-war migrant accommodation camps. There are few buildings still existing at other post-war migrant accommodation places.

The buildings of Block 19 are in their original state. Bonegilla's army beginnings meant that accommodation was severe. The buildings were mostly standard army-type huts, usually unlined timber-framed huts with corrugated iron cladding and low-pitched, gabled roofs. Like the other blocks, Block 19 was self-contained with its own communal kitchen, eating place and ablutions.

We enjoy morning tea, an informative talk followed by a guided tour.



We then make our way to the Blazing Stump Bistro enjoy a delicious lunch in their private newly named "Junction Room" after the original name of the hotel in 1929. Be entertained by Lazy Harry, a local identity, with songs and local stories whilst we enjoy a delicious lunch.



Our next stop is at The Army Museum Bandiana. This is the largest and most diversified Military Museum in Australia. There are guns, tanks, vehicles, motorcycles, uniforms, medals and much more to see and do.



We then visit the Corowa Whiskey and Chocolate Factory. The renovated 1920s flour mill will charm you from entry. Take a step back in time while sampling organic chocolate and liquorice products made from the sister company Junee Liquorice and Chocolate Factory.

*Tonight, we head next door to the Tame Restaurant for a delicious à la carte dinner. The Linga Longa*

Team will join you for an evening of fun and games throughout the evening.

## Day 5

After breakfast we depart for Tocumwal, a picturesque town situated on the Murray River in NSW. The town was used as a major air base by the US during the war effort, but then after the war ended, the area around the airfield became a massive aircraft graveyard and many hundreds of planes were chopped up, stripped, and melted down. A sad end to some of the greatest aircraft of the time.

So why did they choose Tocumwal, the back of beyond, for the then largest aerodrome in the Southern Hemisphere. To answer that question, we must go back to those fearful years to the beginning of 1942, when Japan's military might be in full flight towards us.

Here we enjoy morning tea whilst listening to an entertaining talk explaining the history surrounding the Tocumwal Historic Aerodrome. This airfield played a significant part in the allies' victory and up until recent times (1995), little was known about this fact due to censorship and poor communication systems at the time.



The "Tocumwal Historic Aerodrome Museum" society was formed as part of the "Australia Remembers" 50 years anniversary of the Second World War so that today's and future generations can view and realize the contribution that this airfield made to the victory of the Allies. A visit here should not be missed.

We then make our way to Deniliquin which is nestled along the banks of the Edward River. We will conduct a town tour highlighting the town's heritage.

We stop in town where you have free time to shop or opposite the shops you can explore the beautiful Waring Gardens. The park was established in 1881 and a bridge was built, and a band rotunda added in 1887. Numerous Moreton Bay figs, palms, willows, and other trees date from the 19th century.

Our next visit in Deniliquin is to the newly painted Water Tower.



Following on from our journey on the Silo Art Trail, we visit Scott's Park where the water tower stands at 22.8m in height and 12.8m in diameter.

Facing the newly rejuvenated Scott's Park adventure playground, the tower's surroundings also played a role in the concept for the other side of the mural which will highlight a country night sky.

The artist wanted to capture the fun of life as kids in the country, being around the campfire with friends. He wanted to bring the night sky into view, emphasising how clear it is to see the stars out there. As the sky curves around the tower, the dark colours blend into lighter greens and yellows suggesting morning has come with a kookaburra in a gum tree perched ready for the day. He chose the kookaburra so, he could express the spectacular detail in its feathers, the flecks of turquoise and white are beautiful, and there are a lot of interesting textures and patterns which look stunning.

Our next stop is at the Deniliquin Historical Society Museum which is located on the scenic Edward River in the beautiful old building of the former police inspector's residence.



The museum contains an extensive display and historical record of Deniliquin. Built in 1880 the house has been completely restored and now has a comprehensive and informative display of life in early Deniliquin and its people, reflecting the different facets of a lively community.

Each room has a theme and the numerous well displayed items. If you love Australian history, then the Museum of the Deniliquin and District Historical Society is the place for you. Here we enjoy a light lunch before making our way to the Depot Museum Immerse yourself in the past amongst the family-friendly interactive displays and activities.



We then journey home to Yarrawonga and relax before enjoying our incredibly special farewell dinner.

*Our Farewell Dinner tonight is another delicious meal at Tame Restaurant. This venue is ideal, with its private dining, for our farewell night and its location next door is perfect. Enjoy a fun-filled night with the Linga Longa Team with lots of prizes and give-aways.*

## **Day 6**

Enjoy a leisurely breakfast before making our way to the coach. After a wonderful holiday of new adventures and meeting new friends, we sadly say goodbye as you depart for your coach journey back home.

***We hope your memories of our beautiful area stay in your hearts and minds for a long time.***

### **Note:**

- 1. All venue bookings and days are subject to weather conditions, availability and may change without notice.***
- 2. Our Back again to Yarrawonga Tour Pricings are inclusive of Breakfast, Morning tea, Lunches & Dinners.***